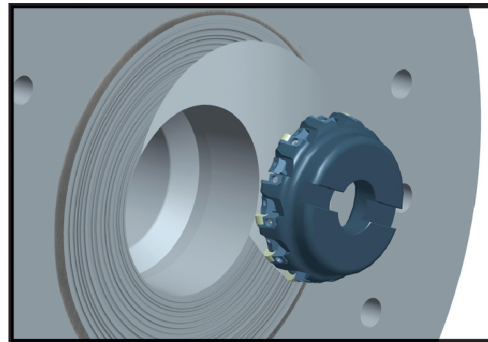


a one-two productivity punch...



A Greenleaf Excelerator[®] Mill is used to face mill the groove surface.

Material:

Inconel 625 clad overlay

Tool:

C404 Excelerator Mill using RNGN-45 T2A WG-300[®] inserts

Speed:

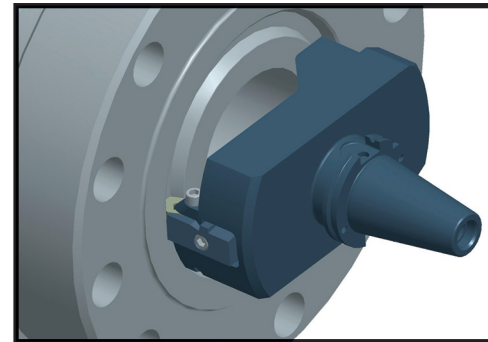
3000 SFM (915 M/Min)

Feed:

.004"/tooth (0,10 MM/tooth)

Cut Time:

2 passes, **68 Seconds!**



A Greenleaf Ring Max[™] cutter plunges and chamfers the groove.

Material:

Inconel 625 clad overlay

Tool:

R-39 using WG-300[®]

Speed:

1500 SFM (458 M/Min)

Feed:

.0012"/Rev (0,03 MM/Rev)

Cut Time:

33 Seconds!

Greenleaf Corporation is a leading developer of cutting tool technology, specializing in the manufacturing of high-performance tungsten carbide and ceramic inserts as well as innovative tool-holding systems. Greenleaf continues to build on 68 years of innovation which centers on supplying customers with productive solutions to every metalcutting situation.

From its headquarters in Saegertown, Pennsylvania, Greenleaf maintains its commitment to pioneering breakthroughs in cutting tool technology and delivering productivity solutions to customers around the world.

To learn more about **Ring Max[™]** and Greenleaf's Excelerator[®] milling products, contact Greenleaf or visit the Special Engineering section of our Global Support Center.



Greenleaf Corporation is ISO 9001 Certified.

Greenleaf Europe B.V.

De Steeg 2
6333 AP Schimmert
The Netherlands
+31 45 404 1774
eurooffice@greenleafcorporation.com

Greenleaf (Hunan) High-Tech Materials Co., Ltd.

No. 3402-A Xiangshang Century Xincheng
No. 17 Kaiyuan Road
Economic and Technical Development Zone
Changsha, Hunan 410100 China
info@greenleafcorporation.com.cn



Machine
API-style
ring grooves
in under

1 minute!*



*EXAMPLE APPLICATION
BX169 API ring groove
Material – Inconel 625 weld overlay
823 RPM | 0.988 IPM (~25mm/min)
Actual in-cut time – 23.08 seconds

Produce BX, R, RX and similar API-style ring grooves in Inconel 625 clad overlay in under one minute!



RING MAX™

a complete ring groove tooling solution

only from  **Greenleaf®**

Greenleaf's new Ring Max™ II is engineered for greater serviceability and now machines a wider range of standard API ring grooves!

Designed specifically for the oil industry, Greenleaf's **Ring Max™ II** line of ring groove tooling is engineered to cut machining time of API ring grooves. Combined with our WG-300® whisker-reinforced ceramic inserts, **Ring Max™ II** tools can reduce cutting time from 30 minutes or more to less than one minute.

- Finishes API ring grooves in Inconel 625 clad overlay in less than one minute
- Creates industry-standard API grooves – including BX, R and RX styles
- Replaceable cartridges designed for easy maintenance
- Groove and chamfers are simultaneously machined in one operation
- Also available for grooving in stainless steel and alloy steel
- Available in both pre-clad and finish cutters



The Ring Max™ III Modular system for shop versatility

- High-precision, two-piece modular system
- Offering multiple head and shank configurations
- Shanks also accept Greenleaf face mills
- Ultimate economical and flexible solution
- Repeatable, dependable, secure - every time!

There's a Greenleaf high-performance insert grade for every ring groove need...

- WG-300® whiskered ceramics for Inconel 625 clad overlay
- Carbide grade G-915 for stainless steel
- Carbide grade GA5036 for alloy steel

